

MODULAR MULTIFUNCTIONAL PURLIN LINE

Product range	Material thickness	Production speed	
U Shape (U100 - U300) C Shape (C100 - C300)	S= 1,5 (1,25) - 3,2 mm	0 - 30 m/min	BASIC

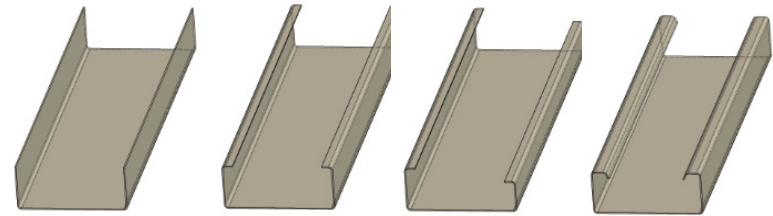
Z Shape (Z100 - Z300) SIGMA-Profiles (S140 - S300) "+ Shape (C+) "+ Shape (SIGMA+) Thermo perforation (to customer specif.)	S= 1,5 (1,25) - 4,0 mm (Optional)		OPTIONAL
---	-----------------------------------	--	-----------------

BASIC SCOPE **OPTIONS**

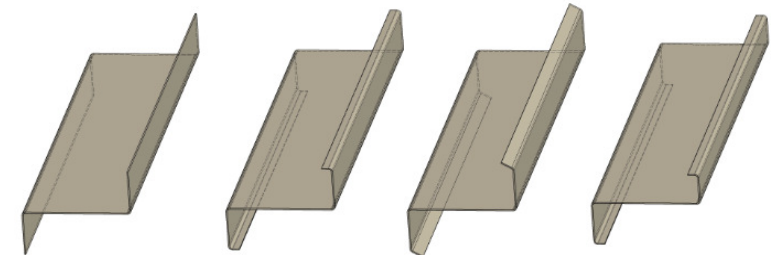
Movable decoiler (10 tons)	Twin decoiler (2x10 tons) - for quick change of coils	OPTION 1
Coil loading table (10 tons)		
Straightener		
Flying punching machine BASIC		
	Add. gantries for Punchng (special cut-outs)	OPTION 2
Flying Notching / shear BASIC (pre-slit)		
	Add. gantries for Notching (special edge cut-outs)	OPTION 3
Inlet conveyor		
Width adjustable rollforming machine U/C		
	Z Shape Forming sections	OPTION 4
	SIGMA Forming section	OPTION 5
	"+" Shape Forming section (C+)	OPTION 6
	"+" Shape Forming section (SIGMA+)	OPTION 7
	Thermo perforation (to customer specifications)	OPTION 8
Flying profile cutter (final profile cutter)		
Outlet conveyor and stacking		
Hydraulic unit	Material thickness up to 4,0 mm instead of 3,2 mm	OPTION 9
Control system	Profile widths up to 400 mm instead of 300 mm	OPTION 10
	DSTV Data transfer	OPTION 11
	Printing system	OPTION 12

Special features of the equipment

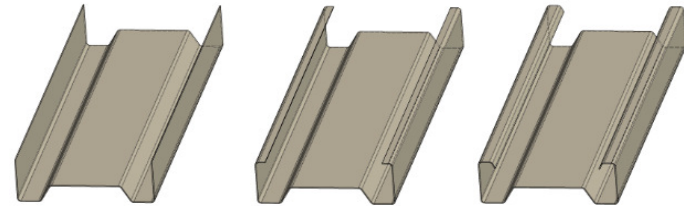
- > Heavy and strong design
- > Hardened roll set (guarantees a long life of roll sets)
- > Flying profile-cut production system (cut after profiling)
- > Integrated automatic flying CNC punching unit for assembly holes
- > Integrated automatic flying cut-out system (notching) of edge parts at begin and end of profiles
- > Integrated automatic flying pre-slit system (notching) at begin and end of profiles (endless profiling system - profile cut)
- > Integrated flying universal profile cutting system (only one cutting tool for all profile shapes - no tool changing needed)
- > Fully automatic adjusting system to profile width and profile heights
- > Integrated automatic roll-gap adjustment (no manual roll adjustment for different material thicknesses needed)
- > Integrated profile data base (set profile types can be called repeatedly)
- > Integrated pattern data base (set pattern types can be called repeatedly)
- > Integrated software tool for calculation of required raw material
- > External software tool for calculation of required raw material for office-use
- > Integrated software tool for remote and local service works and diagnostics
- > Easy set-up software tool of product and machine data
- > Assignment of the punching tools will be optimized and calculated automatically (guarantees highest possible production speed)
- > Windows based operating panel
- > Intensive training of operators included
- > Scope of delivery includes final installation of customers sites



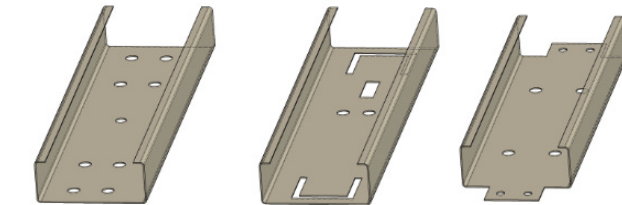
U Profile **BASIC** C Profile **BASIC** Asymmetric Profile **BASIC** C+ Profile **Option 6**



Z- Profile **Option 4** Z Profile **Option 4** Z+ Profile **Option 4** Asymmetric Profile **Option 4**



Sigma - **Option 5** Sigma **Option 5** Sigma + **Option 7**



Assembly holes (Passable for all profiles) **BASIC** Special cut-outs (Passable for all profiles) **Option 2** Special edge cut-outs (Passable for all profiles) **Option 3**